

Arrow guide



Pull



Push



Point



Twist

Preparation

Before you start

Preparation

1

Before following the user steps described in this user guide, please make sure to carefully read the information and disclaimers in the bottom of the last page. Please note that the information provided in this guide is not a substitute for professional medical advice or for reading the instructions for use (IFU) that comes with the infusion set.



Preparation

2

Wash your hands before inserting the infusion set.



Preparation

3

Choose an insertion site as recommended by your healthcare provider. **Do not** use an area right next to your previous infusion site.



Preparation

4

Clean the area for insertion with a disinfectant as directed by your healthcare provider. Be sure the area is air dry before inserting the infusion set.

Insertion



Insertion

5

Pull the red tape to remove the sterile plastic seal.

Caution

Ensure sterility by checking if the tamperproof seal is undamaged. Do not use if the infusion set is already open or has been damaged.



Insertion

6

Pull off the sterile paper. Do not touch the spring at this stage.

Caution

Do not use if the sterile paper has been broken.



Insertion

7

Hold on the lined indentations with one hand, slightly twist and pull the lid off with the other.

Caution

Be careful not to bend or touch the introducer needle.

If the infusion set is not securely placed in the insertion device with the needle pointing straight ahead, pain or minor injury may occur during insertion.



Insertion

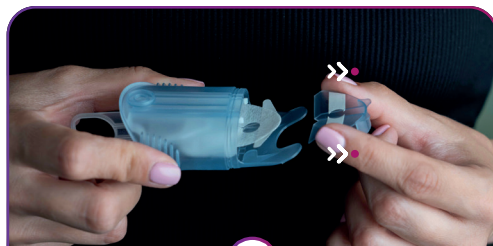
8

Place your fingers on the lined indentations on each side. Pull back the spring softly until you hear a "click". The needle guard will lift up or peel off. Do not touch or bend the introducer needle.

Arrow guide



Insertion



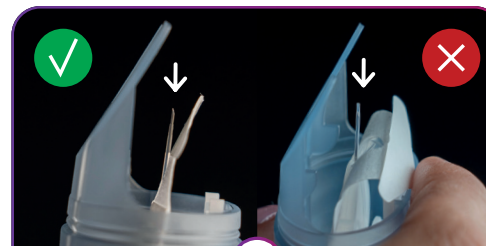
Insertion **9**

If the needle guard hasn't fallen off in the prior step, carefully remove it before insertion.



Insertion **10**

Make sure the tape is not stuck on the introducer needle.



Insertion **11**

Check that the soft cannula is below the tip of the introducer needle. Do not skip this step as it is critical to ensure correct insertion.



Insertion **12**

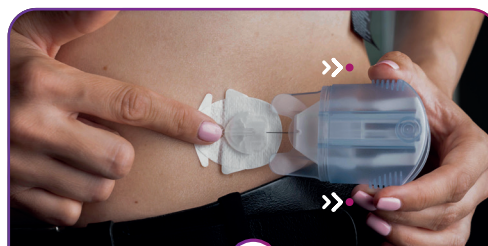
Grab the insertion device with your index finger and thumb by its top- and bottom release buttons and position it with its legs flat on the skin to ensure an insertion angle of 30°.

Insertion



Insertion **13**

Make sure to maintain a 30° angle while inserting. Gently squeeze the top and bottom release buttons once to insert the cannula.



Insertion **14**

To make sure that the cannula stays in place when removing the insertion device and introducer needle, put your finger gently on the clear window while carefully pulling the insertion device straight back.



Insertion **15**

Keep the finger on the clear window. Carefully remove the backing paper under the cannula housing.



Insertion **16**

Remove the backing paper under the front end.

Arrow guide



Pull



Push



Point



Twist

Insertion



Insertion

17

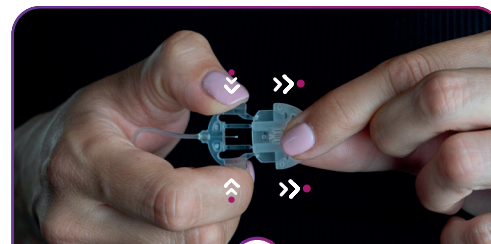
Gently massage the adhesive tape onto the skin.



Insertion

18

Put the lid back on for disposal.



Insertion

19

Remove the paper from the tubing and the circular protective cap from the connector.

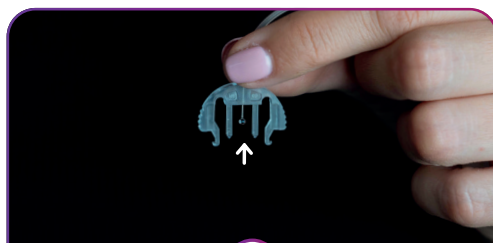


Insertion

20

Follow your pump manufacturer's instructions for use to connect the infusion set tubing to the pump.

Insertion



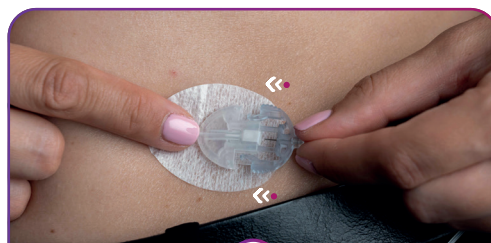
Insertion

21

Hold the infusion set with the needle pointing down. Prime the infusion set according to the pump manufacturer's instructions for use until insulin dispenses from the needle. Ensure there are no air bubbles in the tubing.

⚠ Caution

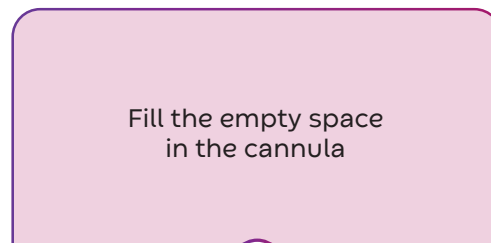
Never fill the tubing while the infusion set is connected to your body.



Insertion

22

After priming the infusion set, place a finger in front of the cannula housing and insert the connector needle until you hear a "click".



Insertion

23

Fill the empty space in the cannula

Fill the empty space in the cannula following your pump manufacturer's instructions.

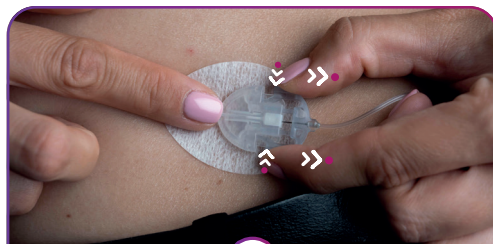
⚠ Caution

Always check your blood glucose level one to three hours after insertion to ensure the infusion set is working properly. Measure your blood glucose on a regular basis. Discuss this with your healthcare provider.

Arrow guide



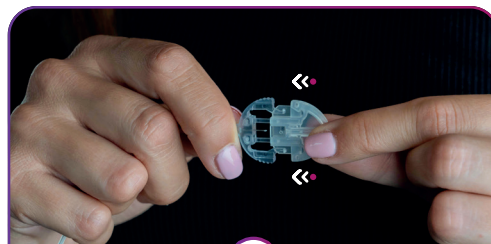
Disconnecting



Disconnecting

A

This infusion set allows you to temporarily disconnect from your pump. Place a finger just in front of the cannula housing and gently squeeze the sides of the connector needle. Pull the connector needle straight out.



Disconnecting

B

Insert the circular protective cap into the connector needle until you hear a "click".



Disconnecting

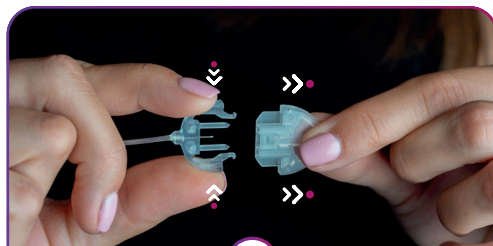
C

Insert the disconnect cover into the cannula housing until you hear a "click".

Arrow guide



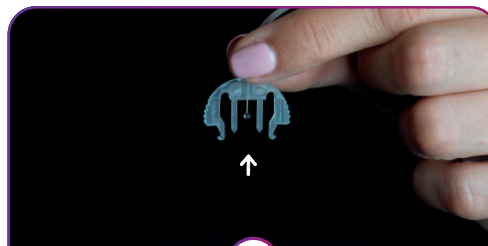
Reconnecting



Reconnecting

D

Before reconnecting the infusion set, make sure the adhesive still sits securely on the skin. Remove the circular protective cap from the connector needle.



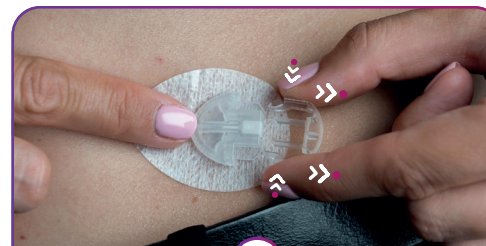
Reconnecting

E

Hold the infusion set with the needle pointing down. Prime the infusion set according to the pump manufacturer's instructions for use until insulin dispenses from the needle. Ensure there are no air bubbles in the tubing.

⚠ Caution

Never fill the tubing while the infusion set is connected to your body.



Reconnecting

F

Remove the disconnect cover from the cannula housing.



Reconnecting

G

Place a finger in front of the cannula housing. Push the connector needle straight in until you hear a "click".